

THE SCALABLE SOLUTION FOR MANAGING USER FLOWS

Aesthetic, modular and durable

- Made in France
- PRM (persons with reduced mobility) accessible
- Prefabricated, self-contained sanitary unit
- Concrete interior and exterior structure
- Exterior finishing adapted to the environment
- Low maintenance cost
- Remote sanitary facility management



Sac Evo
1 PRM cabin, vertical natural wood finish

CONFIGURATIONS AND CLADDING



Configuration with 2 cabins, including 1 PRM
Vertical composite wood cladding



Configuration with 1 PRM cabin - 2 urinals
Painted beige concrete finish



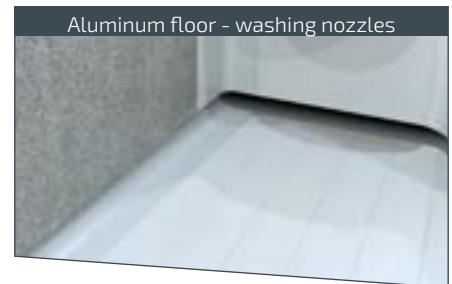
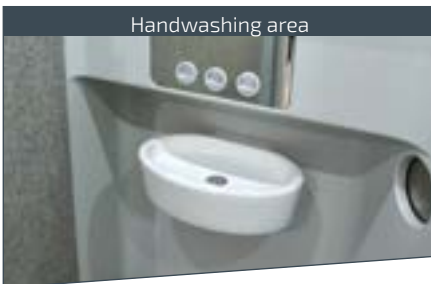
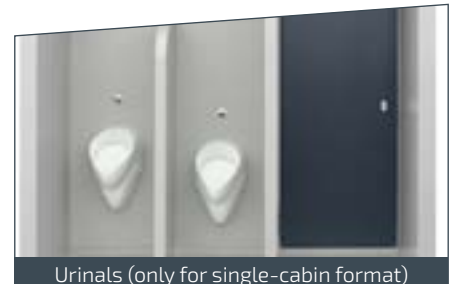
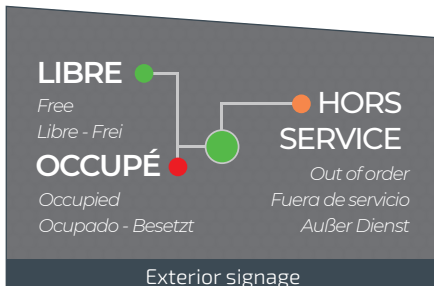
Configuration with 2 PRM cabins
Concrete painted gray finish

Main materials: Concrete, Ductal® Concrete, Steel
Recommended locations: Streets, residential areas, squares
 Public parks and gardens. Tourist attractions. Rest stops/ service areas

Designation: Outdoor
Number de cabin(s): 1 or 2 (other configurations possible)
Weight: from 26,460 lbs to 44,100 lbs (12 to 20 metric tons)

EQUIPMENT

Exterior



Interior

OPERATION

- Free access
- Automatic lighting when the door is opened
- The door can be opened/closed from the inside by means of a pushbutton
- Automatic flushing, disinfection and drying
- Automatic floor washing
- Automatic soap and water distribution, hand dryer
- Programmable opening and closing
- Automatic urinal cleaning
- Forced ventilation and frost protection

+ OPTIONS

- Stainless steel wash basin, toilet and urinal bowls
- Audible and visual alarm
- Urinal privacy screen
- Remote management via an online module
- Cabin heating
- Disinfection kit



Air purifier

FINANCING

Purchase

- on a signed quote or call for bids

PROTECSAN

Protecsan has been providing maintenance and servicing, troubleshooting, cleaning services since 2000.

Simplify the maintenance/cleaning of your sanitary facilities via the Protecsan web interface!

urban
development



FRANCIOLI | PROTECSAN | BIHR